

DANCOVER[®]



Manual
for
Emperor Tent TentZing

EMPEROR TENT

INSTRUCTION GUIDE



SETTING UP YOUR EMPEROR TENT

1

Unpack the emperor tent and lay out on the tent with the groundsheet done. Find the door and rotate the tent so it's facing the desired direction. And then the same procedure is followed for the cover. Put it on the tent and align it with the tent.



2

Take the small pegs and, pulling the groundsheet tight, peg it out.



3

Attach all guy ropes to all cotton loops at the end of the seams.



4

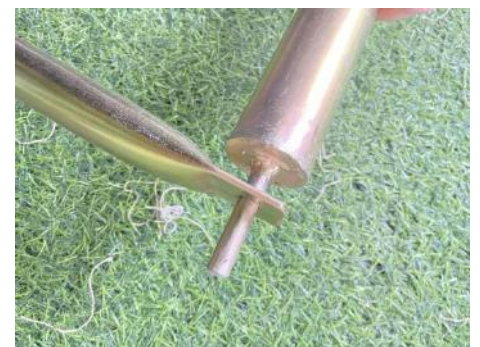
Put the A frame together and place inside the door - it's easier to get it through the door if you complete putting it together once inside. Put the spike through the hole at the top of the door and at the feet into their holding pockets. Then go outside the tent and screw the rain cap on.



5

Fit the two central poles and the cross bar.

This is the only bit of the build that really needs two people. It can be done by one person but it's a bit of a balancing act getting both poles up at the same time while keeping them lined up.



Zip the door shut and attach the extra-long guy rope above the door (for tent and cover). Then use the thicker ribbed peg, and peg out the guy ropes around the whole tent without putting any of them under too much tension.

All the guy ropes need to follow the lines of the seams in the roof. Adjust the guy rope slider so you have approximately 50cm of loop to the peg. This allows adjustment in both directions. It is important to make sure the emperor tent stays symmetrical and that the tension is evenly spread. The pegs should be at least 1m from the tent.



7

Once all the pegs are in, adjust the guy ropes to create the desired tension. By doing it this way and following the seam lines your emperor tent will look like this: perfect and without creases.

TIP: If the door seems too tight move the two guy ropes either side of the door in towards the middle of the door to relieve some tension.



IF YOU HAVE FLY SHEE

8

Tie the shorter guy ropes onto each tag on the awning keeping the long guy rope to one side.

Put the central eyelet over the spike on your emperor tents A frame and raises through to the front pole.

Put the 3 poles provided in the eyelet at the opposite end of the awning and hold taught.

Tie a loop in the end of the longer guy and hook onto the top of the end pole. The slider needs to be at the end that will be pegged into the ground.

Peg into the ground and tighten slider.

Peg all other guys into the ground beginning with the one each side closest to the emperor tent and move forward pegging out the guys ensuring the awning is taught.

Finally re-tighten the guy from the end pole and check the pole is straight.



HOW TO PACK YOUR EMPEROR TENT

The following steps will tell you how to pack up your emperor tent after use. It is vital that your tent is stored bone dry otherwise it will get attacked by mould. It's fine to take it down damp, however, you must ensure you hang it up to dry within 24 hours. You don't have to set the tent up again, just hang it on a washing line, over a car or over some chairs - basically it just needs some air.

1

Take all the poles and pegs out of the tent whilst keeping the canvas off the grass - this helps keep your tent clean and grass stain free. Without standing on the canvas, fold half of the tent over so you have a half moon with the groundsheet facing up.



2

Let that half of the groundsheet dry out and you might want to wipe off any mud or worm casks. If it's not a dry day you'll need to dry the tent out when you get home. The idea is that you always have canvas touching canvas and groundsheet touching groundsheet, so even if the tent is wet you avoid stains.

3

Once the condensation has dried off you need to turn the half moon over so the other half of the groundsheet can also dry out.

TIP: It's a good idea to move the tent off its original spot to avoid putting the condensation back onto the first half.

4

Once the whole tent is dry, you now need to fold the sides into center and then fold over on itself so you end up with a strip the width of the tent bag.

Now fold the strip in half and place the pole bag and peg bag at one end.



5

Next, roll the whole thing into a tight bundle.



6

Use the ties to secure the tent as a roll.



7

Then lift one end, slip the bag over the tent and place everything else inside.



OUTER INFORMATION

Maintenance:

- The cotton must be bone dry before you store the tent.
- Never keep the tent stored away wet for longer than two days, otherwise fungus can affect the canvas which will then create permanent little black dots.
- The canvas has been impregnated to protect it from dirt, ultraviolet radiation and fungus, that is effective for up to 60 weeks of use. Once used past this period of camping you may need to re-proof certain areas that appear more translucent.
- Maintenance starts when setting up your emperor tent. If an emperor tent has not been set up correctly, uneven forces will pull on the canvas, which could eventually lead to damage. To ensure your tent stays correct when you set up, daily guy rope maintenance is necessary.

Lifespan:

The lifespan of your tent is very dependent upon camping conditions – air pollution, ultraviolet radiation, natural dirt (bird droppings, sand, salt water) and domestic dirt (cooking stains, soda, wine, sun cream). The canvas tent should be good for over 60 weeks (so a year) of outdoor usage if cared for correctly.

Fungus and Stains:

In order to limit fungus and stains on your tent:

- Store your tent 100% dry.
- When dealing with fungus, use a soft brush or sponge and a lot of fresh water.
- Only use specialized cleaning products to remove difficult stains. Other chemical products can cause the cotton to leak. We suggest you have your tent re-impregnated with water proofer on any area that has been cleaned.

Enjoy your emperor tent and remember please only store it bone dry.

ENJOY YOUR GLAMPING EXPERIENCE!

Contact information

Austria



Belgium



Croatia



Denmark



Estonia



Finland



France



Germany



Ireland



Italy



Latvia



Lithuania



Nederland



Norway



Poland



Portugal



Spain



Sweden



Switzerland



UK

